

The background of the entire image is a close-up, slightly blurred photograph of a stack of thick wooden planks. The wood has a warm, reddish-brown hue with visible grain patterns and some surface imperfections like knots and cracks. The planks are stacked horizontally, creating a sense of depth and texture.

BLUE EXCHANGE

EXPORTERS OF AFRICAN TIMBER

PRODUCT - CANTS / SAWN TIMBER

PRODUCT - CANTS



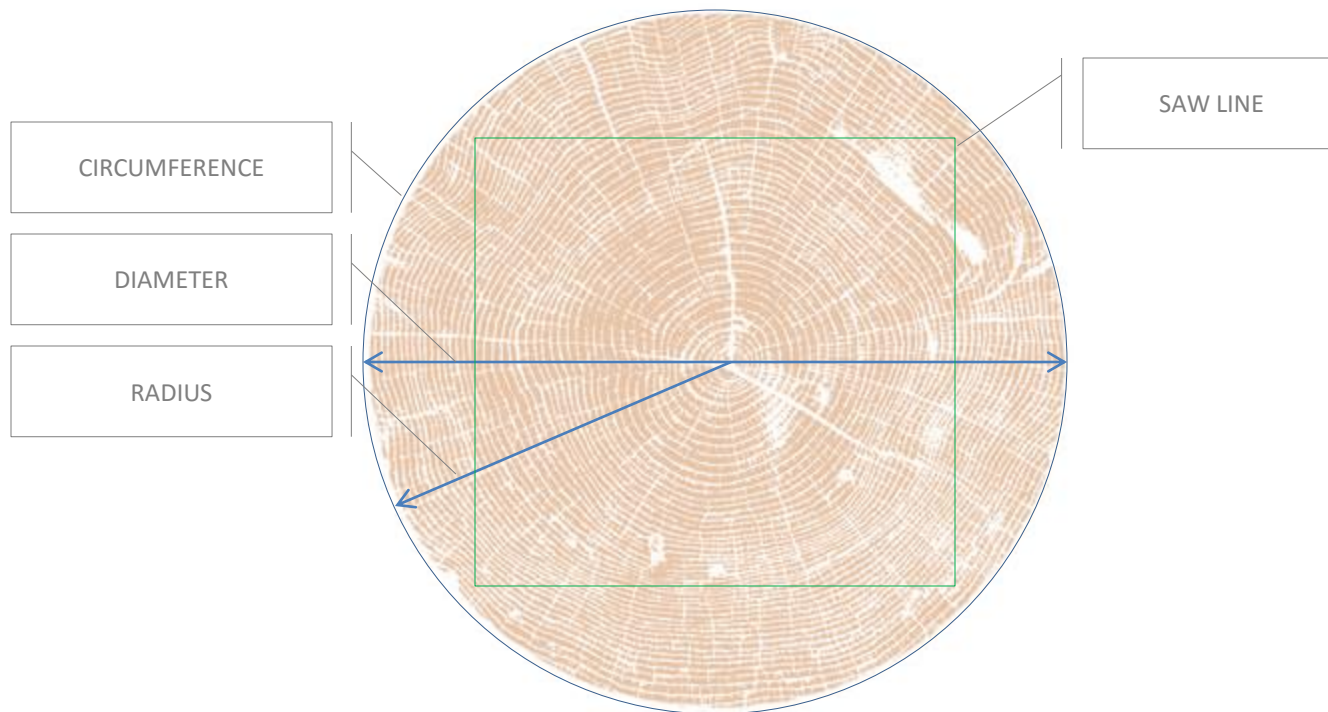
Cutting Logs into Four Sided Cants for Optimum:

- Usable Wood Retention
- Squaring and Stacking Space
- Transport Costs
- Maximum Wood per Measured Cube



PRODUCT - CANTS

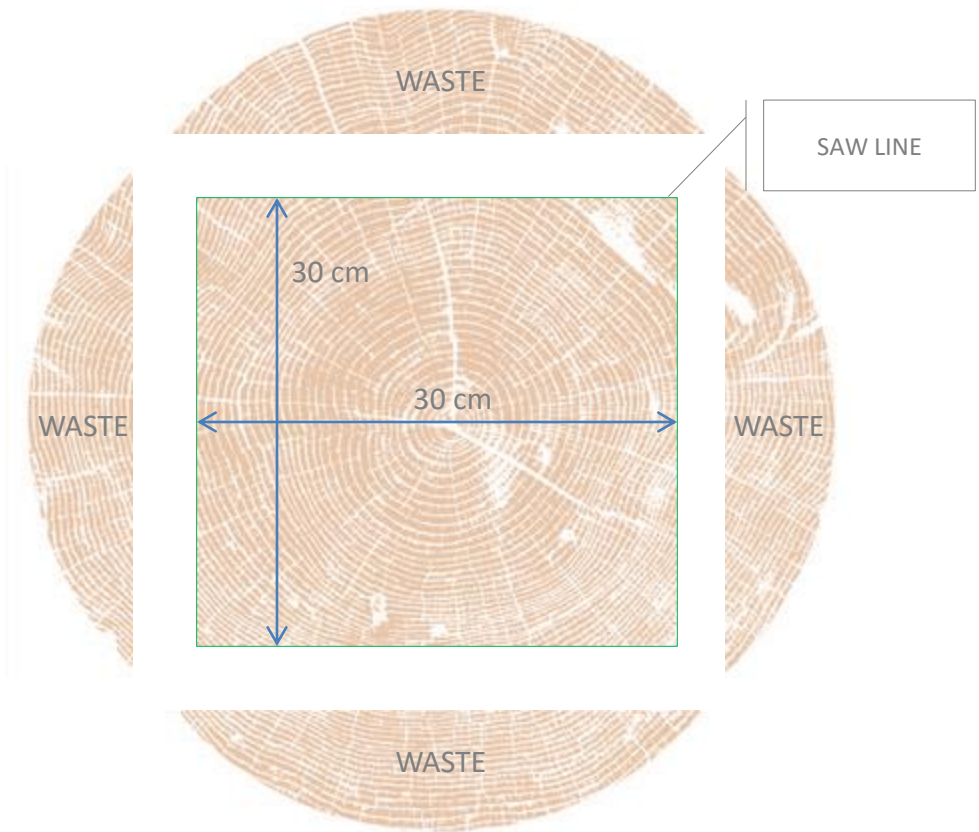
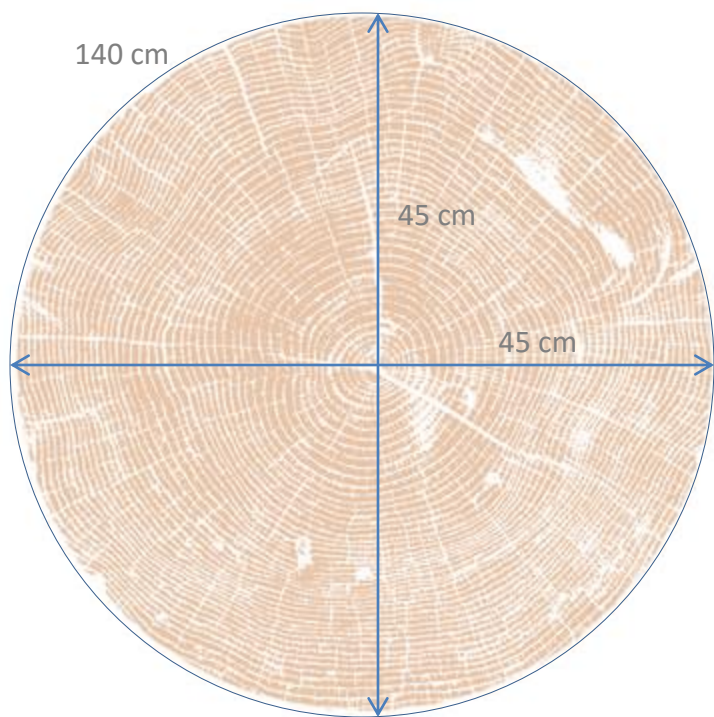
THE IDEAL LOG - THE PERFECT CANT CAN BE SAWN





PRODUCT - CANTS

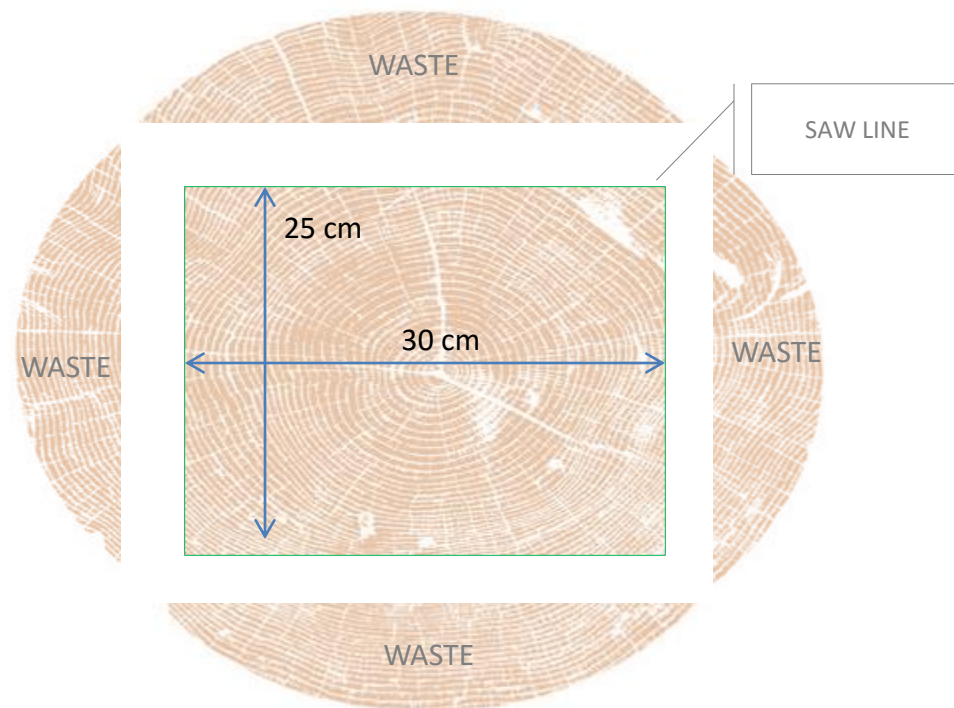
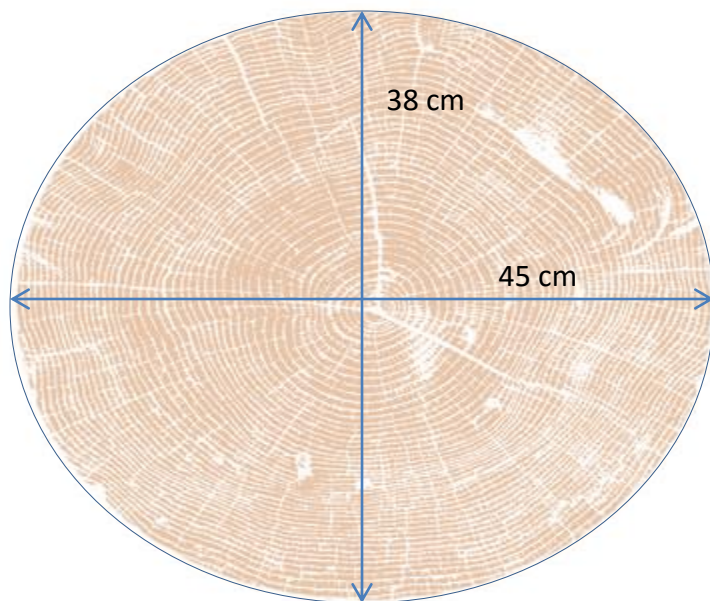
THE IDEAL LOG - THE PERFECT CANT CAN BE SAWN



Waste can amount to 40 Percent and More of Sawn Log

PRODUCT - CANTS

NATURE - ALLOWING FOR FOUR SIDED SAWN CANTS - VARIED DIMENSIONS

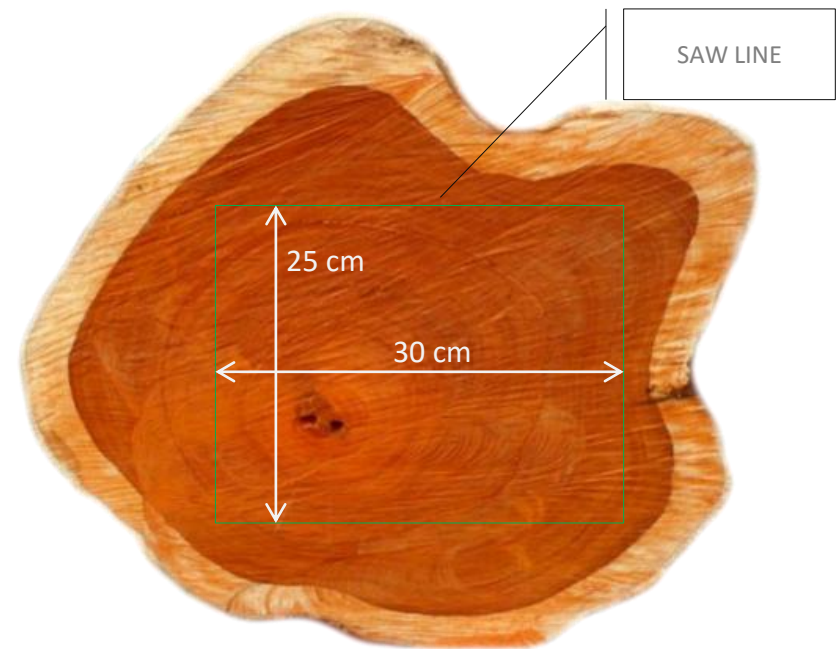


Waste can amount to 40 Percent and More of Sawn Log

PRODUCT - CANTS

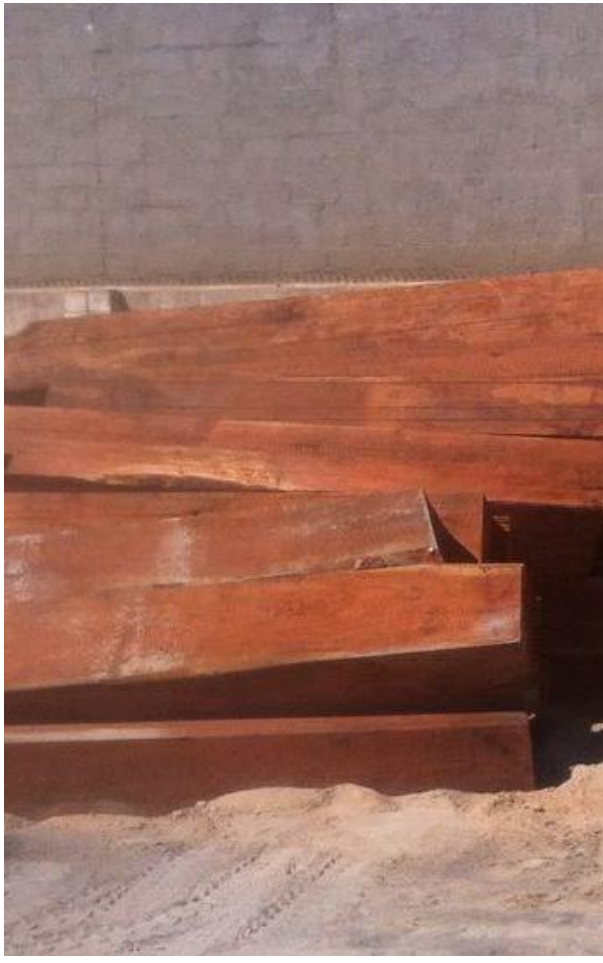


NATURE
ALLOWING FOR 4 SIDED CANTS
VARIED DIMENSIONS





PRODUCT - CANTS





PRODUCT - CANTS





PRODUCT - CANTS





PRODUCT - CANTS

